

Room 7, 3 Memorial Road

Worsley, Manchester, M28 3AQ

£825 Per month



1



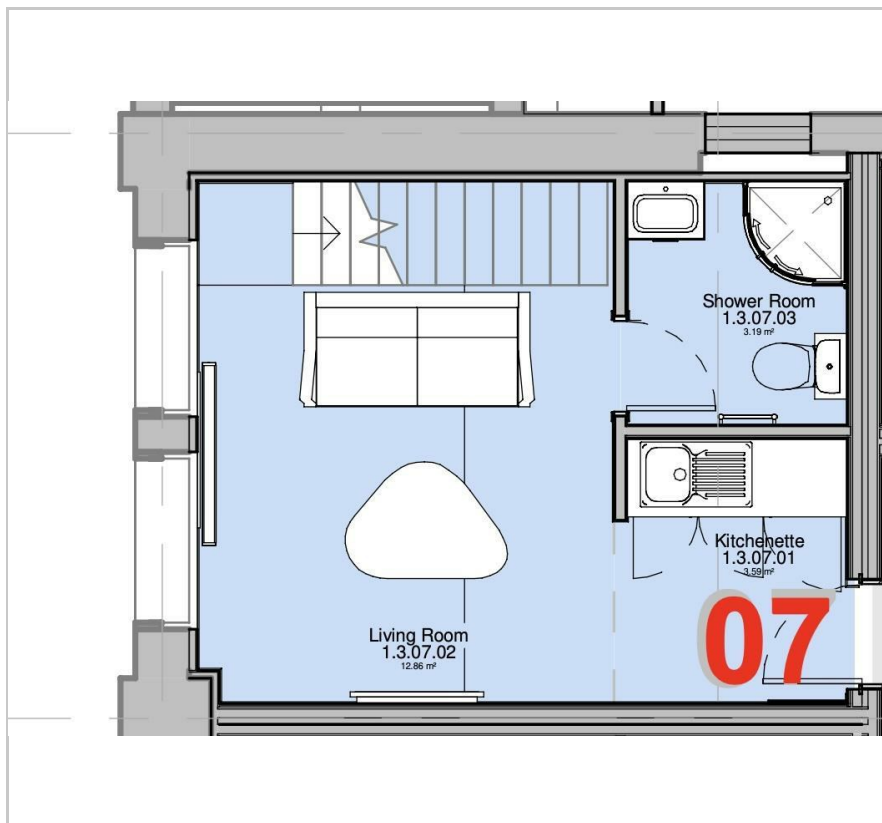
1



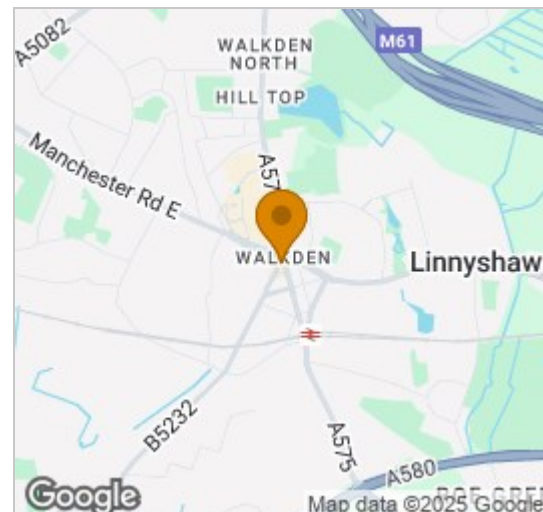
1



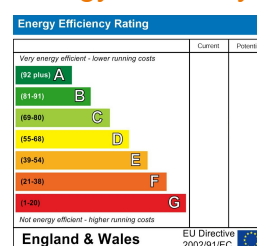
Floor Plan



Area Map



Energy Efficiency Graph



Viewing

Please contact our The Lettings Club North West Office on 0330 133 4919 if you wish to arrange a viewing appointment for this property or require further information.

- Mezzanine Level Bedroom
- Bills included
- Close to Worsley Train station / Motorway links
- Separate Bathroom / Kitchen Space
- Communal Kitchens
- Available Immediately



A SELF CONTAINED STUDIO APARTMENT AVAILABLE IN THIS BEAUTIFULLY CONVERTED HMO PROPERTY* *BILLS INCLUDED*

(Single occupancy only)

We're delighted to be able to offer this well-located studio apartment to the rentals market, available immediately.

The apartment is finished to a high specification and offered fully furnished, ideal for tenants looking for a straightforward move. Tenants also benefit from bills being included, a huge saving in the current climate! (Excluding use of washer/dryer which is chargeable)

The apartment is likely to be extremely popular so please get in touch as soon as possible if you think it might be of interest.

A look inside the property:

The property briefly comprises;



These particulars, whilst believed to be accurate are set out as a general outline only for guidance and do not constitute any part of an offer or contract. Intending purchasers should not rely on them as statements of representation of fact, but must satisfy themselves by inspection or otherwise as to their accuracy. No person in this firm's employment has the authority to make or give any representation or warranty in respect of the property.

Top Floor The Refuge Buildings, 9-11 Sunbridge Road, Bradford, BD1 2AZ
Tel: 0330 133 4919 Email: info@thelettingsclub.com <https://www.thelettingsclub.com>