



Flat 13, 19 Croft Street

, Dewsbury, WF13 1AR

£550



1



1



1



E

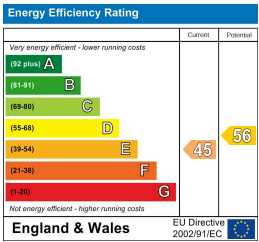
Floor Plan



Area Map



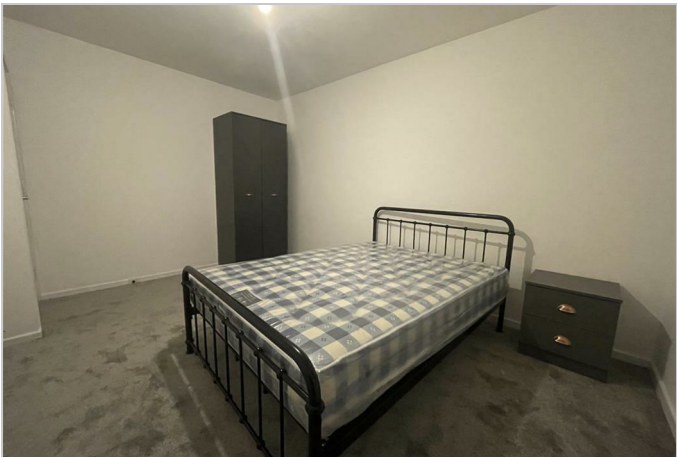
Energy Efficiency Graph



Viewing

Please contact our The Lettings Club Yorkshire (North & West) Office on 0330 133 4919 if you wish to arrange a viewing appointment for this property or require further information

- Bright Rooms
- Modern Fixtures
- Separate Rooms
- Grade 2 listed Building
- Great Location
- Dewsbury Train Station 0.2 Miles
- Available Now
- Unfurnished
- Council Tax Band - A
- EPC - D



\*ONE BEDROOM BEDROOM APARTMENT LOCATED JUST MINUTES FROM DEWSBURY TRAIN STATION\*

Offered to let and available from 5th January 2026 is this well proportioned one bedroom apartment on the top floor of a popular residential development, a short walk from Dewsbury train station and the town centre. The apartment has recently benefitted from a scheme of refurbishment works and is offered unfurnished, ready for a tenant to make into their own home!

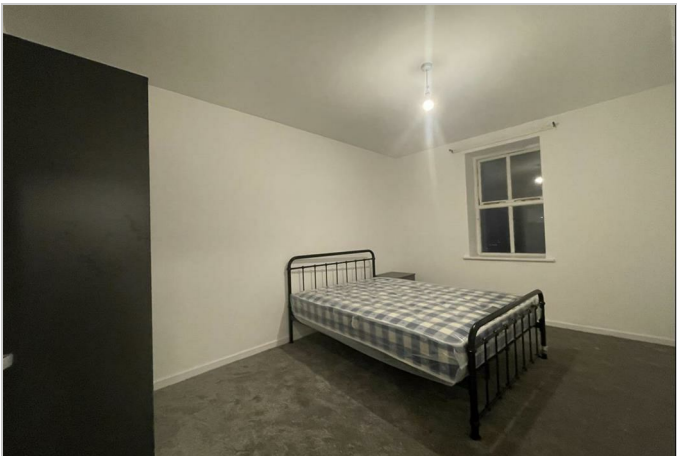
This style of property is high in demand at the moment and is likely to be extremely popular so please get in touch as soon as possible if you think you might be of interest.

A look inside the property:

The property briefly comprises; Entrance hallway, kitchen equipped with a cooker, living space, one double bedroom and a good sized bathroom.

Location:

The apartment is situated in converted 19th century Grade 2 listed building in the heart of Dewsbury town



These particulars, whilst believed to be accurate are set out as a general outline only for guidance and do not constitute any part of an offer or contract. Intending purchasers should not rely on them as statements of representation of fact, but must satisfy themselves by inspection or otherwise as to their accuracy. No person in this firms employment has the authority to make or give any representation or warranty in respect of the property.